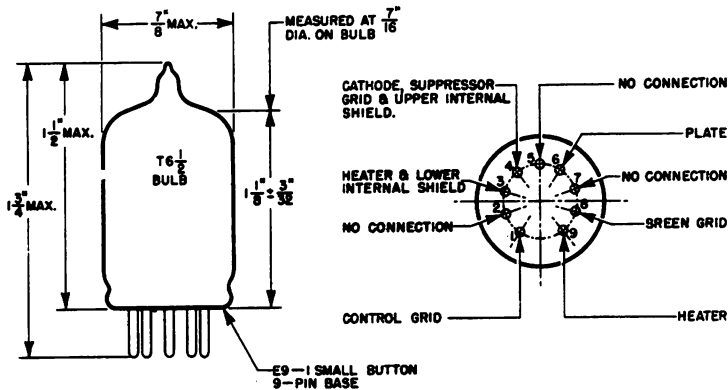


ADVANCE ELECTRON TUBE DATA SHEET

WESTERN ELECTRIC 5847/404A ELECTRON TUBE

**5847/404A**  
**MINIATURE**  
**PENTODE**



**DESCRIPTION**

This tube is a miniature pentode of the unipotential cathode type. It is designed for use in high-gain amplifiers at high and ultra-high frequencies.

**MAXIMUM RATINGS (Design Center Values)**

Plate Voltage .....	180	volts
Screen-Grid Voltage .....	150	volts
Plate Dissipation .....	3	watts
Screen-Grid Dissipation .....	0.75	watt
Cathode Current .....	35	milliamperes
Heater-Cathode Voltage .....	50	volts
Grid Resistance .....	0.1	megohm
Bulb Temperature .....	120°	Centigrade

**GENERAL CHARACTERISTICS**

**ELECTRICAL DATA**

Heater Voltage, A-C or D-C .....	6.3	volts	
Heater Current .....	300	milliamperes	
Direct Interelectrode Capacitances .....			
	Without External Shield	With External Shield (RMA #315)	
Grid to Plate, Maximum .....	.05	.04	µf
Input .....	7.0	7.1	µf
Output .....	2.5	2.9	µf

**MECHANICAL DATA**

Cathode .....	Coated Unipotential
Bulb .....	T 6-1/2
Base .....	Small Button, 9-pin
Mounting Position .....	Any

**OPERATING CONDITIONS AND CHARACTERISTICS**

Plate Supply Voltage .....	150	<sup>*</sup> 160	volts
Screen-Grid Supply Voltage .....	150	160	volts
Control Grid Voltage .....	0	+8.5	volts
Plate Current .....	13	13	milliamperes
Screen-Grid Current .....	4.5	4.5	milliamperes
Cathode Resistor .....	110	600	ohms
Transconductance .....	12500	12500	micromhos

\*Operating conditions to minimize gain variations due to supply voltage fluctuations.

